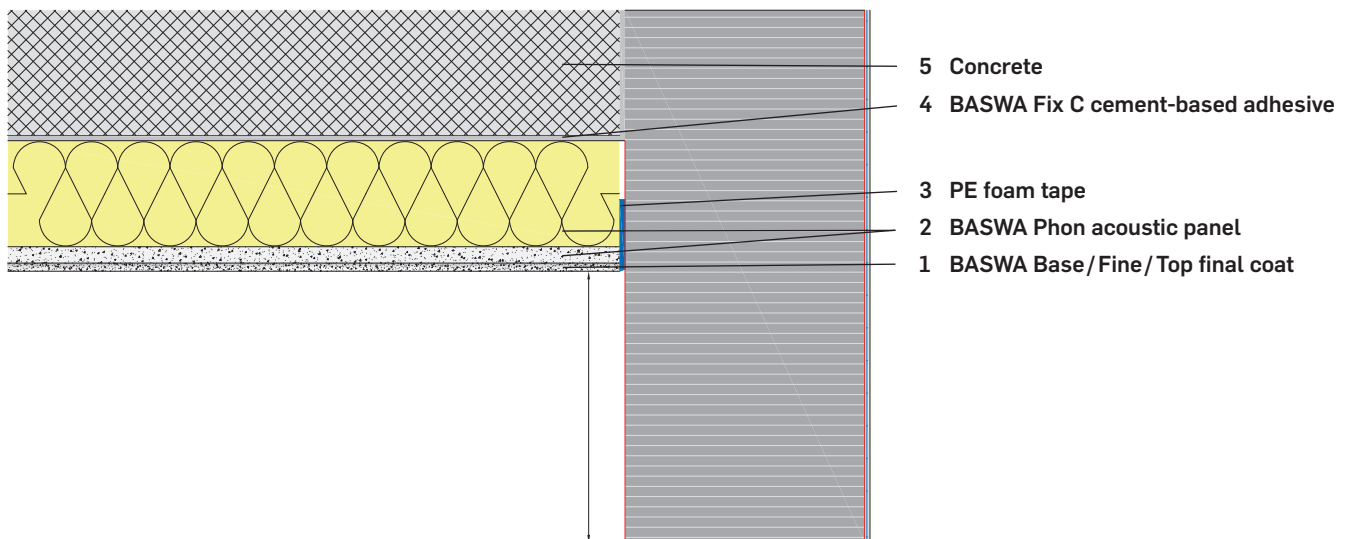


Application for protected outdoor areas

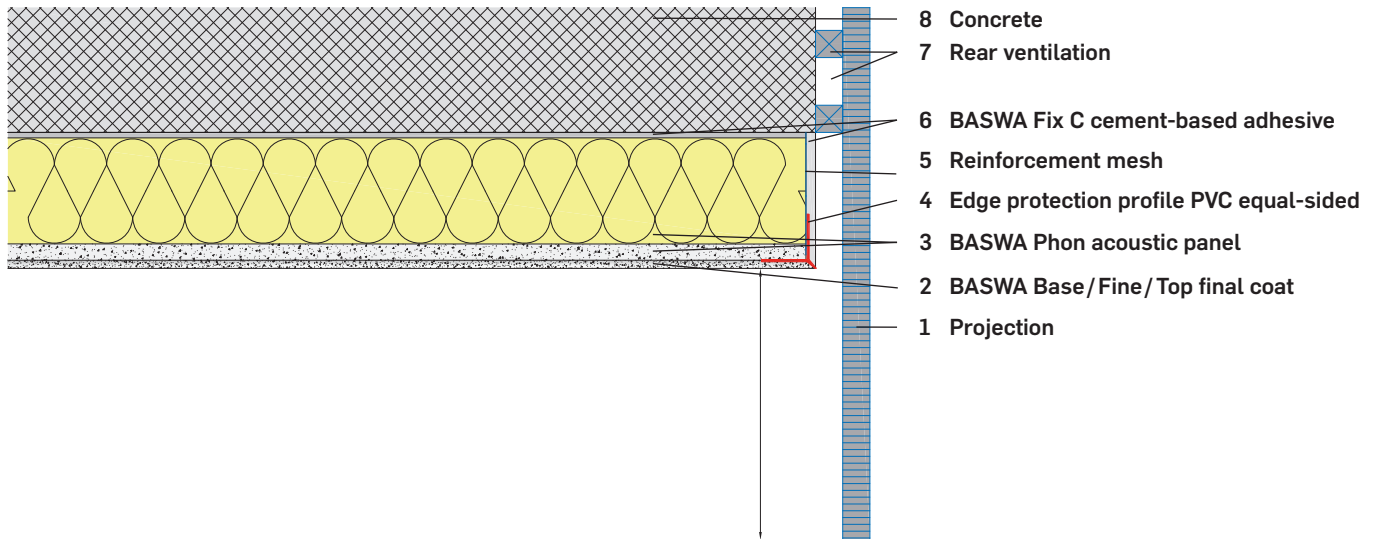
General

BASWA acoustic systems are used in weather-protected outdoor areas such as soffits on balconies. This additionally reduces noise pollution from the outside, indoors. The occupied surfaces must be protected from direct weather influences. This can be ensured, for example, by placing a beam at least 10 cm below the BASWA surface. When installing in protected outdoor areas, the surface must then be hydrophobized with BASWA Protect.

BASWA Phon System for outdoor use – Insulation



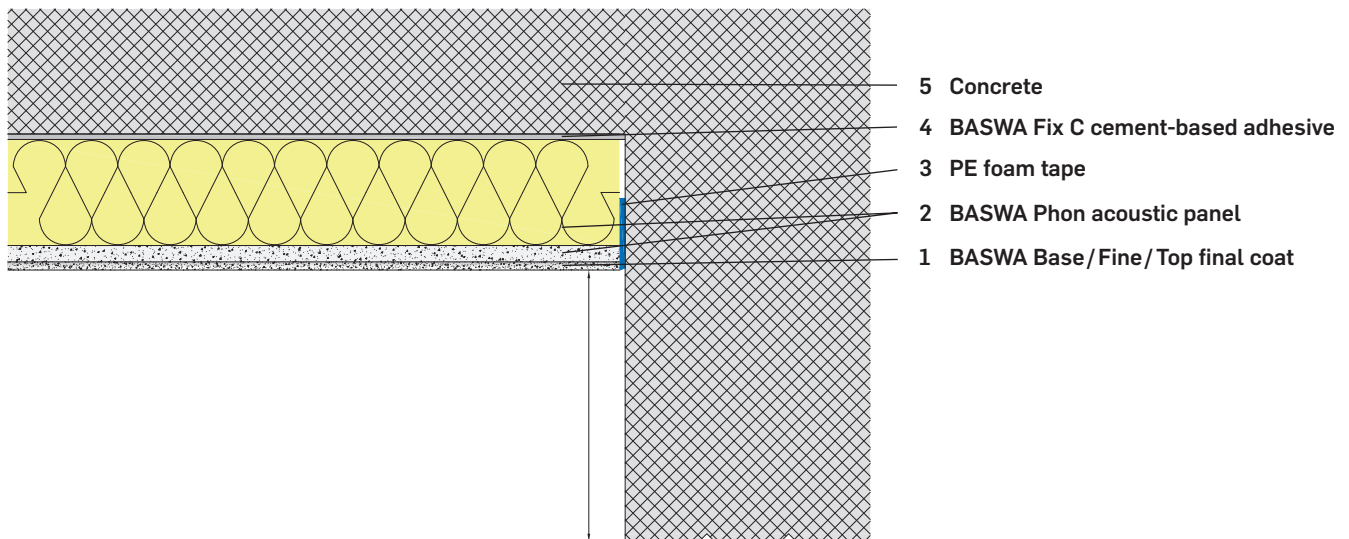
BASWA Phon System for outdoor use – rear ventilation



Connections to adjacent components

Connections to adjacent components must be made with PE separating strips, as the system can be used in the space outside for expansion.

BASWA Phon System for outdoor use – massive



Surface hydrophobation with BASWA Protect

BASWA surfaces in protected outdoor areas must be treated with BASWA Protect.

BASWA Protect is a specially developed premium impregnation system to achieve deep hydrophobicity with optimum protection for BASWA acoustic surfaces. The acoustic performance of the treated surface is not affected.

The deep penetration of BASWA Protect into the acoustic system results in considerably lower dirt and water absorption. This prevents the immediate penetration of liquids and thus reduces the absorption capacity of contamination of a liquid type, and of dirt particles that have bonded with liquids.

BASWA Protect is delivered ready for use and sprayed onto the dry, finished BASWA surface in 1 to 2 working steps by a suitable spraying device.

Further information on BASWA Protect can be found in the latest product data sheet.

Disclaimer

The previously mentioned data, in particular the suggestions for the processing and application of our products, are based on our knowledge and experience in the normal case, prerequisite is that the products have been correctly stored and used. Because of the different materials, surfaces and deviating working conditions, no guarantee of the result of the work can be given, or liability be placed, regardless of the legal relationship, neither from these instructions, nor from verbal advice, unless we are culpable of intent or gross negligence. Hereby, the user must prove that he /she has provided punctual, complete written knowledge to BASWA in order for BASWA to attain a correct and successful evaluation. Upon receipt, the user must check the products for their suitability for the envisaged application. Changes to the product specifications remained reserved. Observe the protection rights of third parties. Furthermore, our respective sales and delivery conditions remain applicable. The current product data sheet is applicable and can be requested from us.